



Plot 8 Kneeton Grove

, East Bridgford, NG13 8NY

£234,995

A beautifully designed two-bedroom home, The Milford is a stylish and thoughtfully arranged residence offering approximately 682 sq ft of well-planned accommodation, ideal for first-time buyers, downsizers or those seeking a low-maintenance modern home. Built by Peveril Homes, this attractive property combines practical design with bright, contemporary living spaces, creating a home perfectly suited to modern lifestyles.

The ground floor has been carefully laid out to maximise both space and functionality, featuring a fitted kitchen to the front of the property with a range of integrated appliances and space for everyday dining. To the rear, the spacious open-plan lounge and dining area provides a welcoming and versatile living space, ideal for relaxing or entertaining, with French doors opening onto the garden and allowing natural light to flood the room. A guest WC and useful storage complete the ground floor accommodation.

To the first floor, the principal bedroom offers a generous double bedroom retreat, while a second well-proportioned bedroom provides flexible space for guests, home working or family use. Both are served by a contemporary family bathroom, with additional storage positioned off the landing.

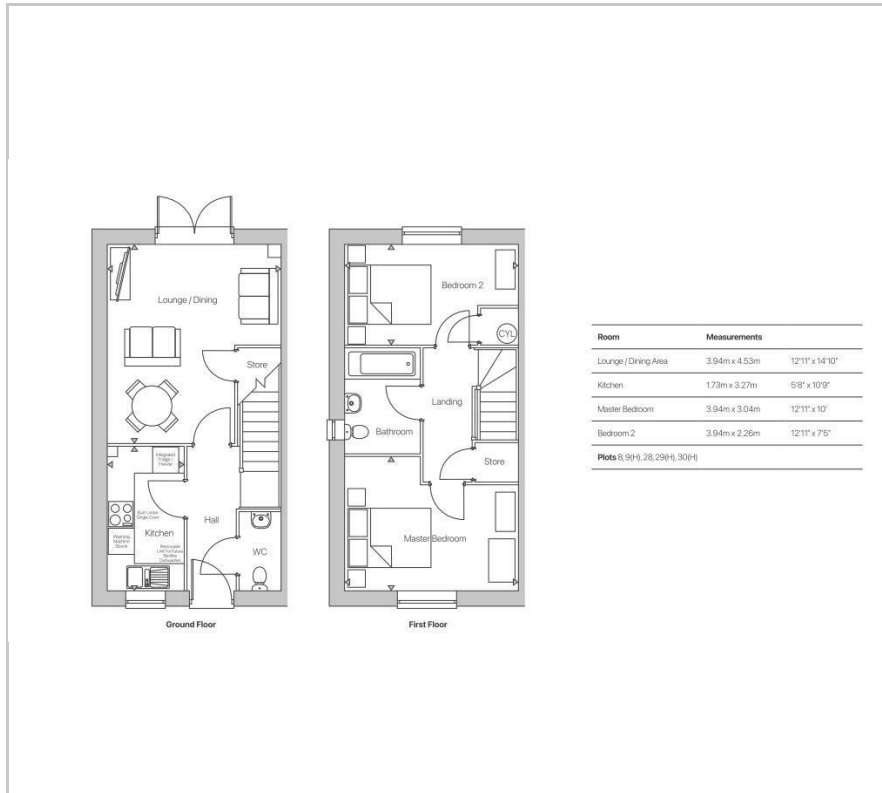
Viewing

Please contact our Berkley Leicester Office on 0116 2544755 if you wish to arrange a viewing appointment for this property or require further information.



 2  1  1 

Floor Plan



Area Map



Energy Efficiency Graph



These particulars, whilst believed to be accurate are set out as a general outline only for guidance and do not constitute any part of an offer or contract. Intending purchasers should not rely on them as statements of representation of fact, but must satisfy themselves by inspection or otherwise as to their accuracy. No person in this firm's employment has the authority to make or give any representation or warranty in respect of the property.